



# COFFEE FILTER FLOWERS

Create beautiful flowers from simple coffee filters!



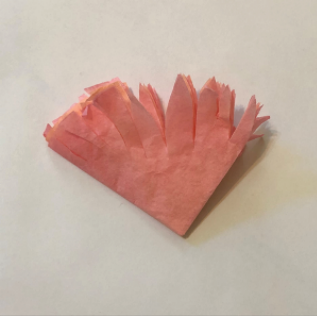
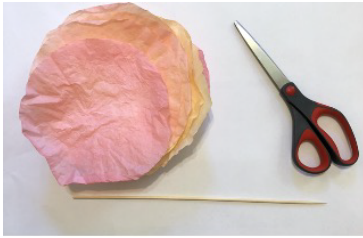
## Materials:

Paper coffee filters  
Food coloring  
Hot glue gun  
Wooden dowel or pipe cleaner



## Step 1:

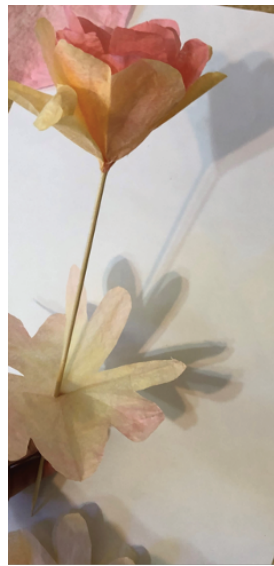
Prepare the food coloring water. The more drops of food coloring put in the water, the darker the color will be. Dip the coffee filters into the colored water. The longer a filter is left in the water, the color will be darker once the filter dries. Polly and Lou want you to know that food coloring can stain surfaces, so make sure that you have prepared an area for making this craft. Let the dyed filters dry completely. In order to speed the process up, a hairdryer can be used to dry them.



### Step 2:

Once the filters are completely dry, stack two to three filters on top of one another, then fold the circle into fourths (fold the filters in half, then fold them in half again.)

Using scissors, cut petal-shaped designs into the folded filters. Experiment with different shapes in order to create different petals. Unfold the filters to reveal the large petals. Repeat this step until all of the filters have been cut into petal shapes.



### Step 3:

In order to make a flower with a stem, pierce one of the coffee filters with a wooden dowel.

Push the petal near the top of the stem, then apply glue in a circle. Carefully press the petal around the stem so that the glue can dry.

Repeat this step by adding petals beneath the first petal. The flower in this example was made using six coffee filters. The more filters are used, the bigger and fluffier the flower will be.